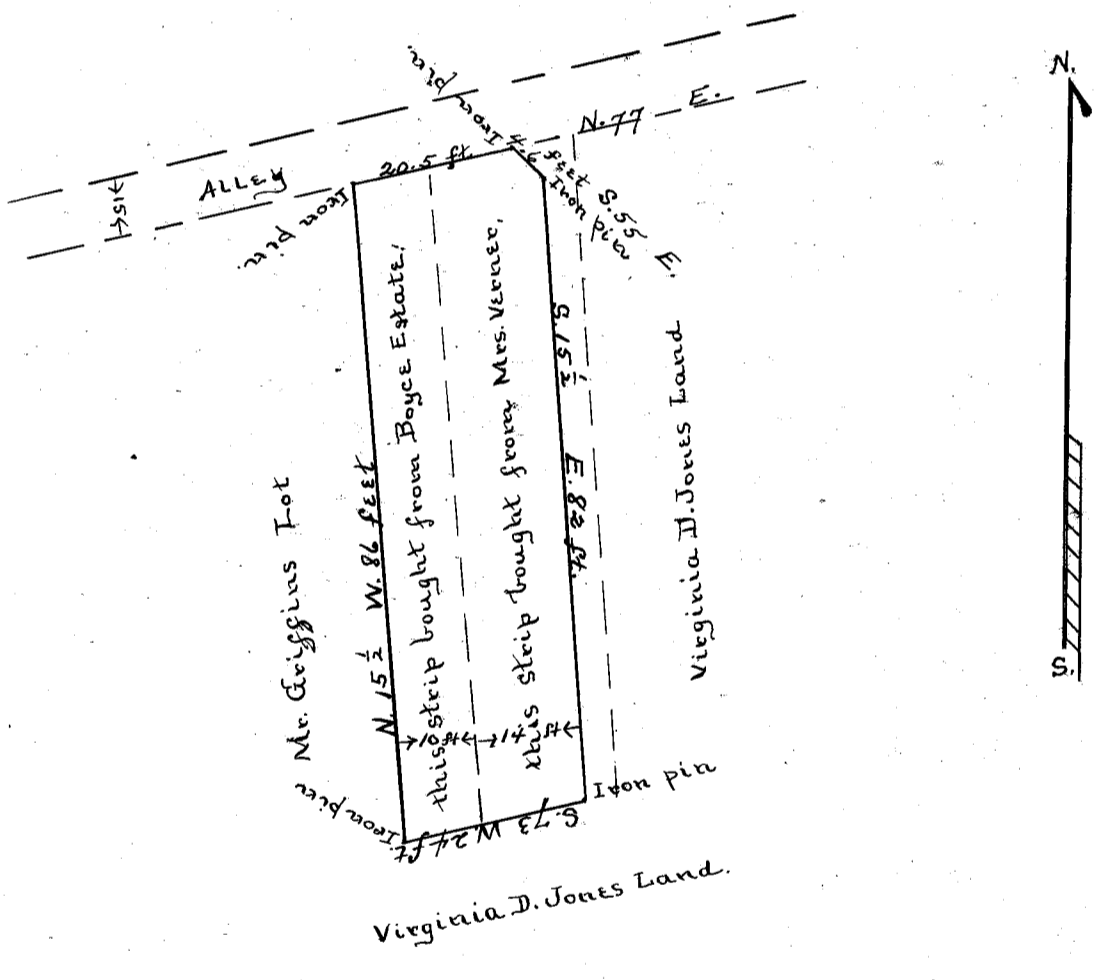


Scale 10 chs. per inch.

See Deed recorded in Deed Book "VVV" at page 308.



State of South Carolina
 County of Greenville.

The above plat represents a piece of land sold by Dr C.C. Jones to Mrs. Griffin and situated in Ward 2, City of Greenville, State and County aforesaid, and hath such shapes, marks and bounds as represented above.

W.A. Adams, Surveyor.
 July 1st., 1909.

Recorded Dec. 9th, 1909.

and copied by J.B.